

Seaside views

the **GUIDE** **ART**

SOME of the north-east's most spectacular features are dramatically captured in Scarborough Art Gallery's new exhibition.

From The Humber to the Tyne begins on Saturday and features large, multi-panel photographic works from around the region.

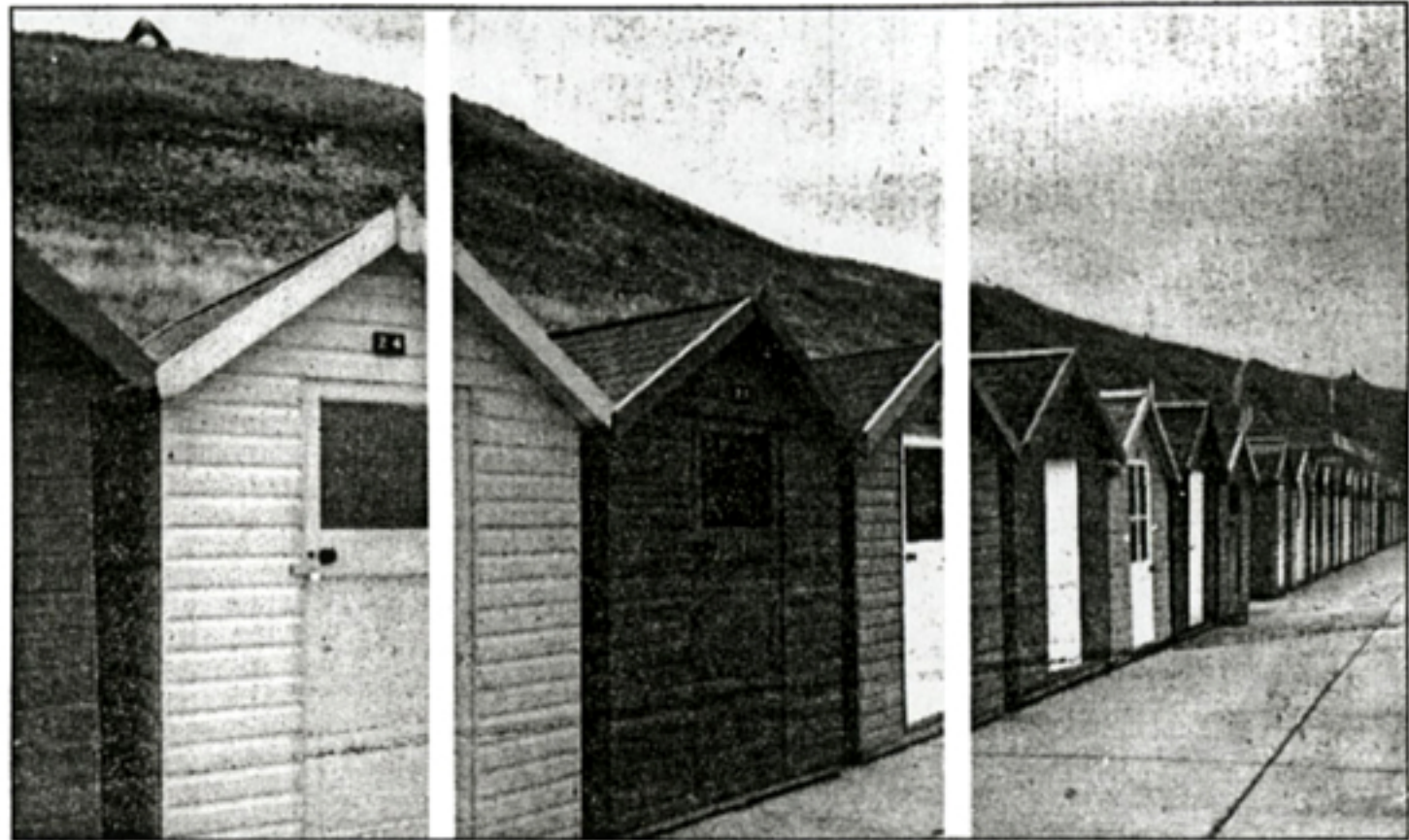
Despite being based in Massachusetts, Robert is a regular visitor to the east coast and has a fascination with seaside resorts in the region.

The work on display offers a unique photographic perspective by presenting images that are wider than the normal field of vision.

Scarborough is featured in several pictures of the South Bay pool, the harbour, the Spa and a cafe.

Whitby and Bridlington also provide the inspiration for several of the photographs on display.

The works, while primarily recording the decay of



SEA VIEW ...
One of the exhibits in the display

sea-side resorts, is also influenced by Robert's American heritage and how American culture is infused into our lives.

This is Robert's second exhibition in the town. He previously exhibited his work at the Crescent Arts in 1994. His work has also been exhibited widely in America.

Scarborough Art Gallery is open on Tuesdays to Sundays, from 10am to 5pm. From the Humber to the Tyne is running from Saturday until 31 October.

Admission is £3 (£1.50 concessions, £7 for family) for an annual pass to all Scarborough Museums & Gallery sites or £2 for a simply a single visit to the gallery.

End of outing

OUT of the Studio '98 comes to a close at the Crescent Arts Workshop this weekend.

The exhibition highlights the work of the Crescent Arts' resident artists and has been a great

success with its varied and innovative displays.

It can be seen until Saturday and the Crescent Arts, in The Crescent, is open on Tuesdays to Saturday from 10am to 1pm and 2pm to 5pm.

Art sale draws to close

SCARBOROUGH Art Society's final summer sale of paintings draws to a close on Saturday.

There is a chance to both see and buy a variety of work by members of the popular art group. The display is open daily from 10am to 5pm until Saturday, in the sunken gardens on St Nicholas Cliff.